

LEGEND

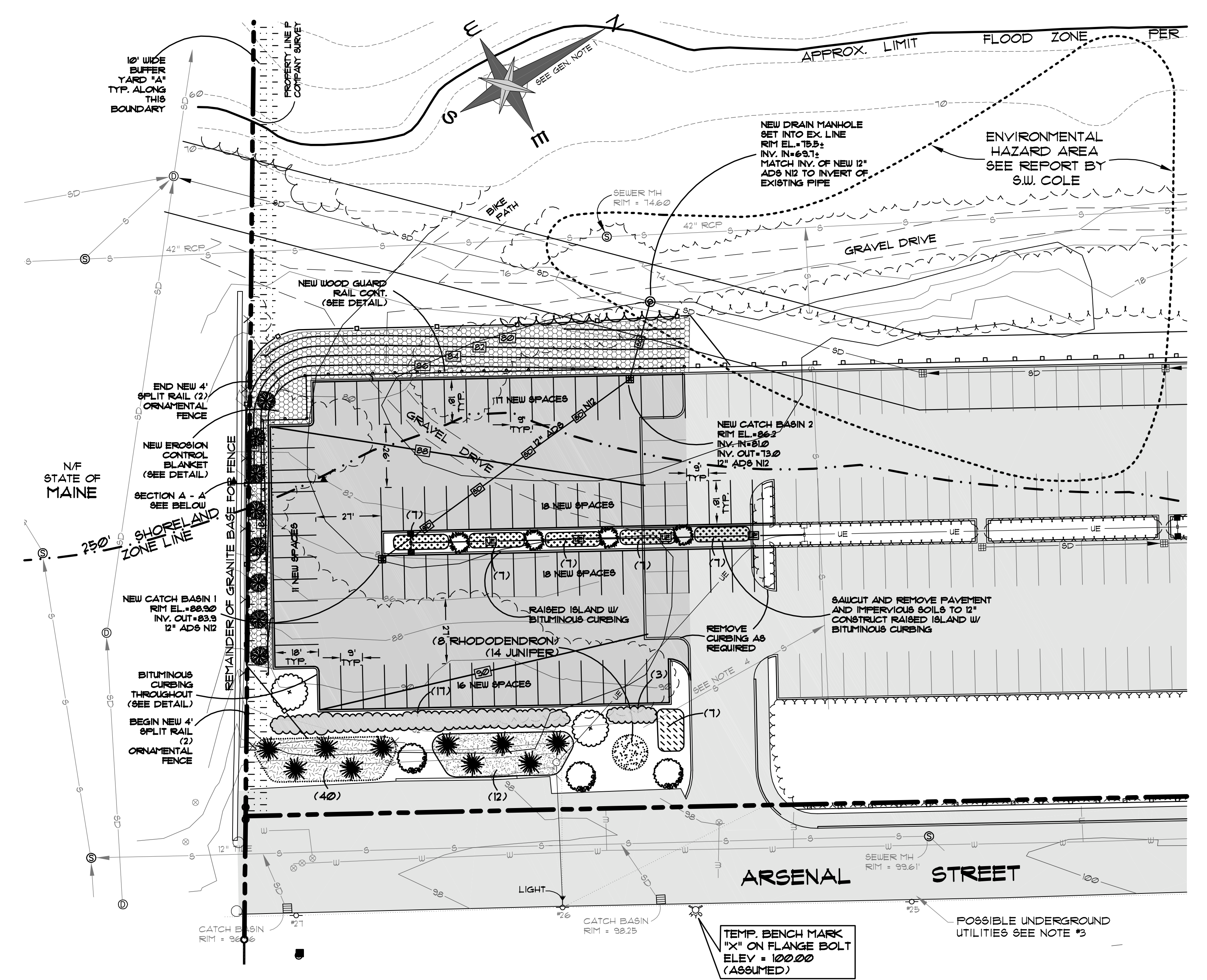
- EXISTING CONTOUR
- SEWER LINE
- WATER LINE
- ⊕ WATER SHUT OFF
- ⊕ HYDRANT
- ⊕ SEWER MANHOLE
- ⊕ TELEPHONE MANHOLE
- ▭ CATCH BASIN
- UTILITY POLE WITH OVERHEAD WIRES
- EXISTING TREE LINE
- NEW CONTOUR
- ▭ NEW CATCH BASIN
- NEW LIGHT POLE
- NEW TREE LINE
- NEW UNDERGROUND ELECTRIC LINE
- NEW STORY DRAIN LINE
- NEW STORY DRAIN LINE
- ▭ EXISTING BUILDING
- ▭ NEW PAVED AREA
- ▭ EXISTING PAVED AREA TO REMAIN

LANDSCAPE LEGEND

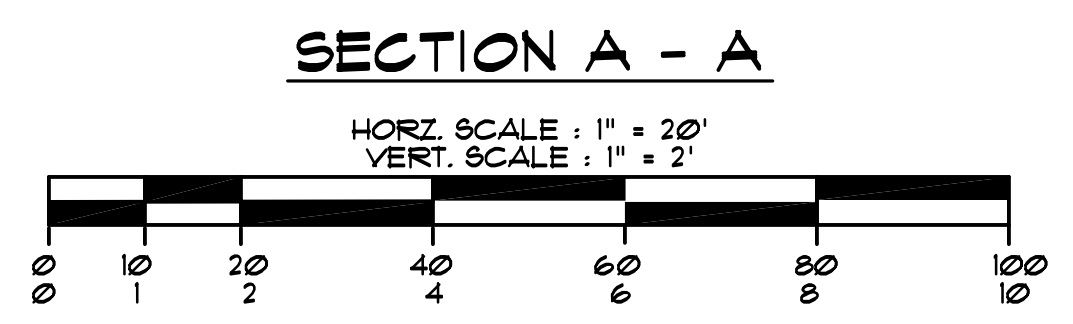
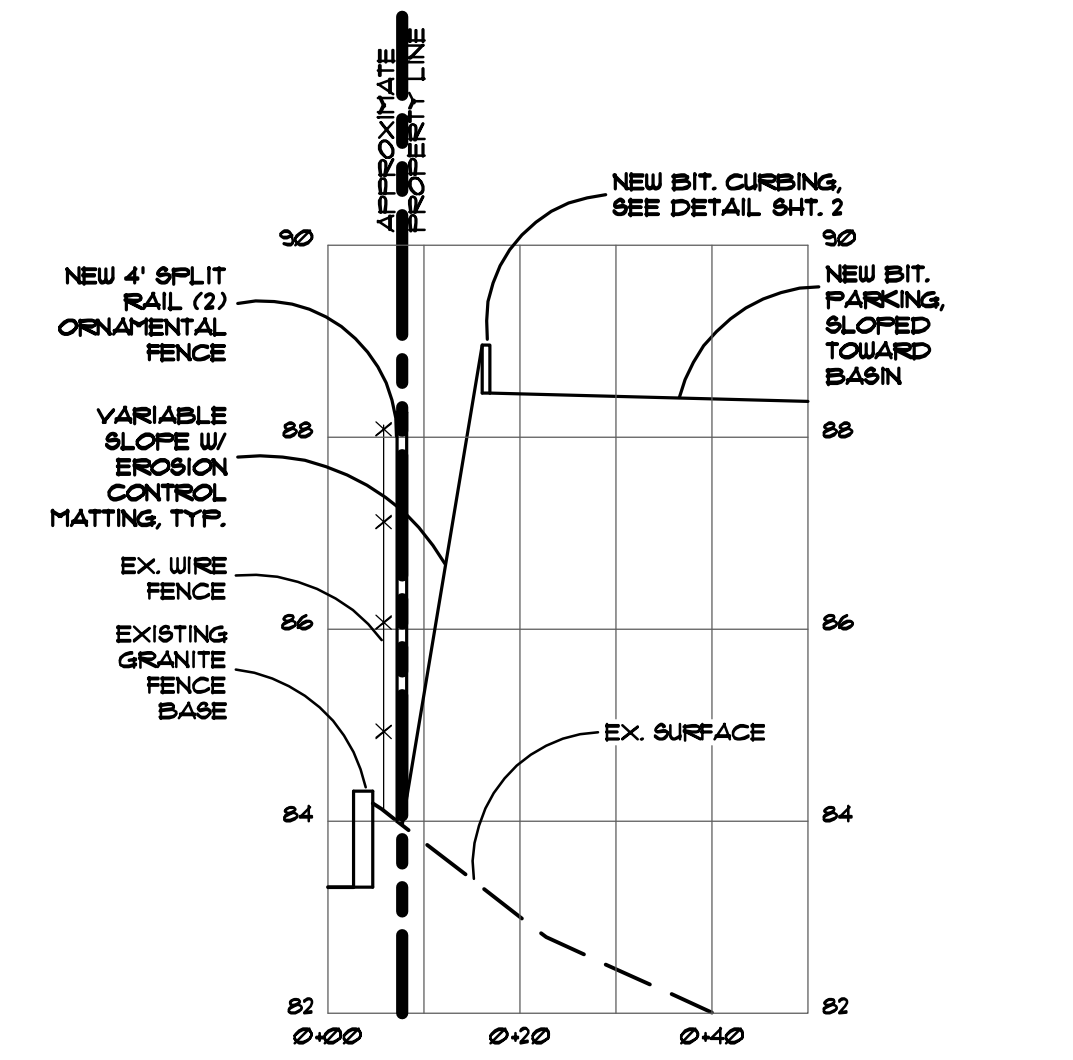
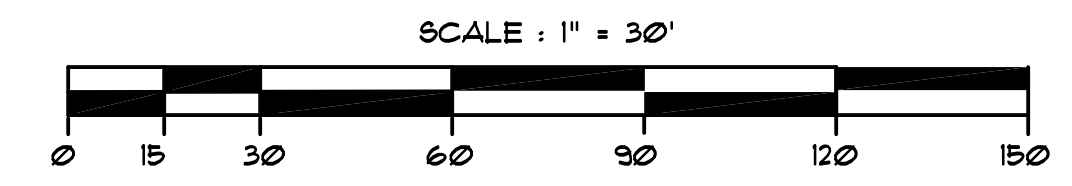
- 4 - ACER RUBRUM (2.5" - 3" CALIFER) "RED SUNSET MAPLE"
- 2 - GINKGO BILOBA (2" - 2.5" CALIFER) "GINKGO"
- 3 - PYRUS CALLERYANA (2.5" - 3" CALIFER) "CLEVELAND FEAR"
- 10 - MALUS SUGARTYME (2" - 2.5" CALIFER) "SUGARTYME FLOWERING CRAB"
- 35 - EUONYMUS ALATOS COMPACTA (18"-24") "COMPACT BURNING BUSH"
- 1 - PINUS MUGO (15"-18") "MUGO PINE"
- 8 - RHODODENDRON F.J.M. (18"-24") "F.J.M. RHODODENDRON" MIXED WITH
- 14 - JUNIPERUS HORIZONTALIS FLUMOSA (15"-18") "ANDORRA JUNIFER"
- 40 - SPIREA BOYALDA (15"-18") "MAGIC CARPET SPIREA"
- 12 - BERBERIS THUNBERGII (12"-18") "CRIMSON FYGMY BARBERRY"
- 20 - SYRINGA TINKERBELLE (2'-3') "TINKERBELLE LILAC"
- 8 - PICEA ABIES (L.) KARST. (2'-3') "NORWAY SPRUCE"

NOTES

- 1) THIS PLAN WAS PREPARED BASED ON A PLAN ENTITLED "TOPOGRAPHIC SITE PLAN - MAINEGENERAL MEDICAL CENTER" DATED JULY 19, 2001 PREPARED BY SJR ENGINEERING, INC. IT NOT BASED ON A FIELD SURVEY AND ASSURES THAT PREVIOUSLY PROPOSED IMPROVEMENTS WERE MADE AS DESIGNED. NO PROPERTY LINE DETERMINATION HAS BEEN MADE EXCEPT ALONG THE ARSENAL PROPERTY.
- 2) TEMPORARY BENCH MARK - "X" ON FLANGE BOLT OF HYDRANT ACROSS ARSENAL STREET FROM THE PAVED DRIVE LEADING ONTO THE SITE. ELEVATION = 100.00 (ASSUMED).
- 3) THE EXISTENCE, LOCATION, DEPTH AND SIZE OF UNDERGROUND UTILITY LINES, STRUCTURES AND/OR TANKS WAS NOT VERIFIED. CONTRACTOR SHALL CONTACT DIGSAFE, AUGUSTA WATER DISTRICT, AUGUSTA SANITARY DISTRICT AND ON-TARGET TO LOCATE ALL PUBLIC AND PRIVATE UTILITY SERVICES BEFORE ANY CONSTRUCTION BEGINS.
- 4) THE AUGUSTA SANITARY DISTRICT INDICATES A POSSIBILITY OF SEWER LINES IN THESE LOCATIONS.
- 5) THE PARCEL IS APPROXIMATELY 5.3 ACRES.
- 6) THE PARCEL LIES WITHIN THE "BP" BUSINESS PROFESSIONAL ZONE.
- 7) THE PARCEL IS SHOWN ON TAX MAP 31 AS LOT 10.
- 8) ZONING REQUIREMENTS - MINIMUM ALLOWED BUILDING SETBACK = 10' FRONT AND SIDES MINIMUM ALLOWED PARKING SETBACK = 10' WITH FENCE, 15' WITHOUT FENCE MAXIMUM IMPERVIOUS SURFACE COVERAGE = 35% MAXIMUM FLOOR AREA COVERAGE = 14% MAXIMUM BUILDING HEIGHT = 42'
- 9) THERE IS A NET GAIN OF 15 PARKING SPACES (9' x 18' WITH 26" OR 21" WIDE AISLES).
- 10) LANDSCAPING LAYOUT AND SELECTION AS SPECIFIED BY "MAINEGENERAL MEDICAL CENTER" PER REQUEST.



PLANTING PLAN



REV. 2 10/14/01 ADDED NEW BNDRY, FENCE ETC. ON ARSENAL SIDE
 REV. 1 10/3/01 MISC. PER COMMENTS A.F. C.O.A. OF 9/26/01, 9/28/01

S.J.R. ENGINEERING
 21 MAYFLOWER ROAD
 AUGUSTA, MAINE
 TEL: (207) 622-1616

**PLAN, PROFILE & PLANTINGS
 PARKING IMPROVEMENTS**

MAINEGENERAL MEDICAL CENTER
 ARSENAL STREET - AUGUSTA, MAINE
 KENNEBEC COUNTY

SCALE: AS SHOWN DRAWN BY: BOMAC PROJECT: MEGENAUG2-TSP2
 DATE: AUG, 2001 CHECKED BY: SJR DRAWING # 3