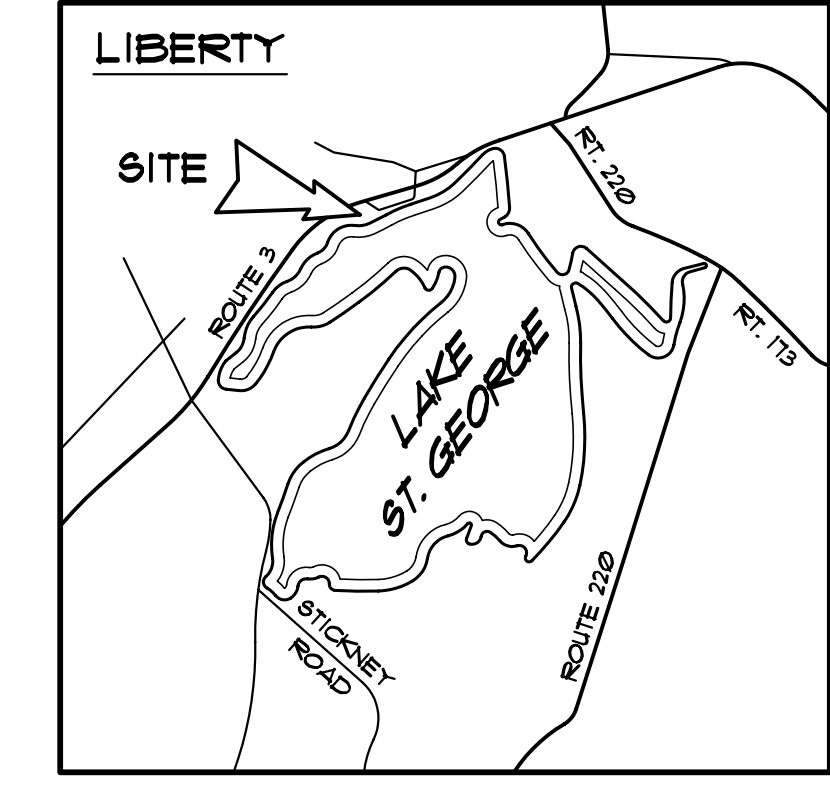


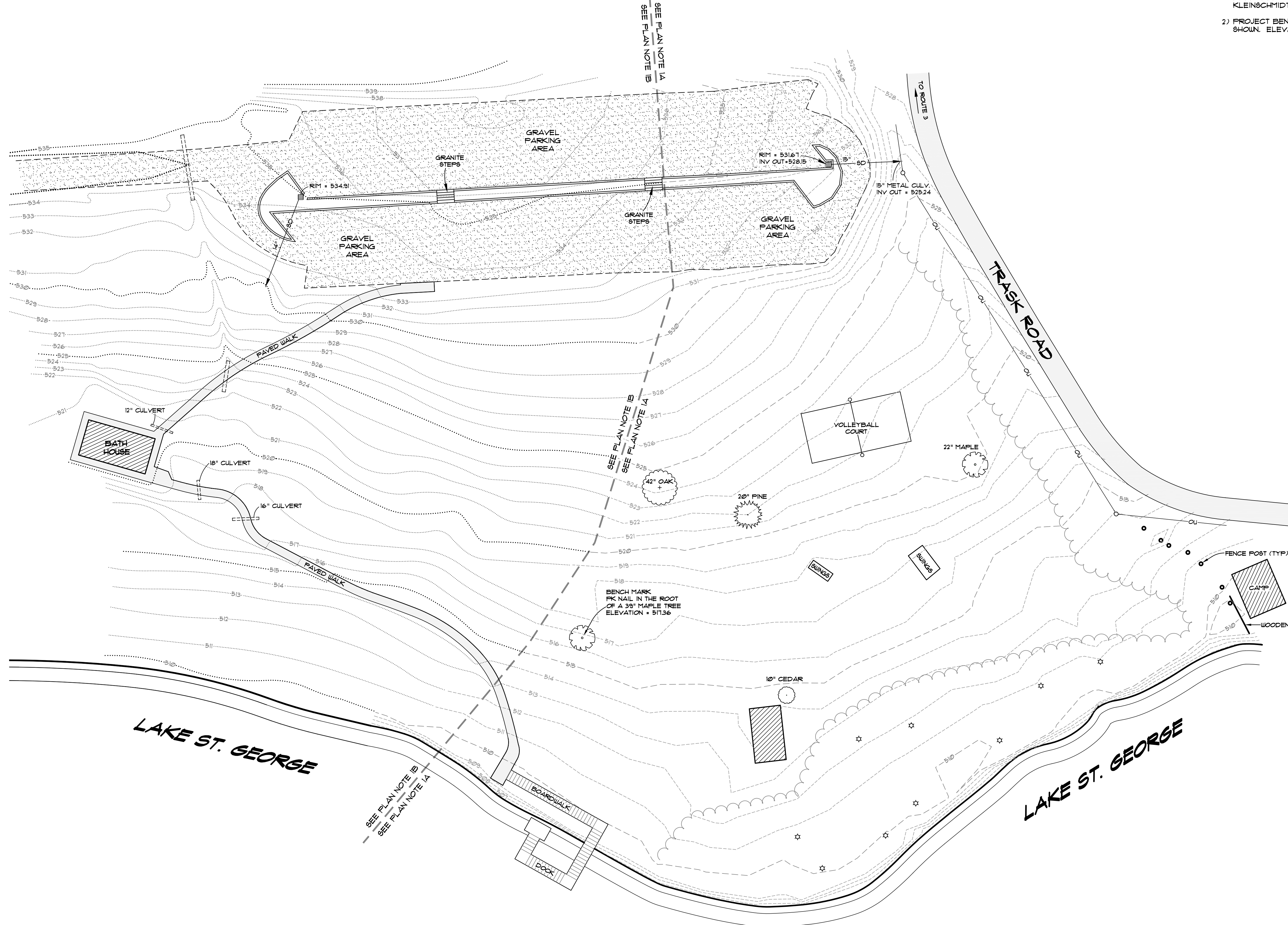
PRELIMINARY
FOR APPROVALS ONLY

NOTES

- 1) INFORMATION SHOWN IS BASED UPON THE FOLLOWING TWO PLANS -
 A) "TOPOGRAPHIC SURVEY OF A PORTION OF LAKE ST. GEORGE STATE PARK", DATED JANUARY 22, 2008, PREPARED BY MORIN LAND SURVEYING.
 B) "BEACH BATHHOUSE SITE PLAN AND PARKING DETAILS", DATED JULY 30, 2009, PREPARED FOR STATE OF MAINE DEPARTMENT OF CONSERVATION, PREPARED BY KLEINSCHMIDT ENERGY & WATER RESOURCE CONSULTANTS.
- 2) PROJECT BENCH MARK IS A PK NAIL SET IN THE ROOT OF A 39" MAPLE TREE AS SHOWN. ELEVATION = 511.36.

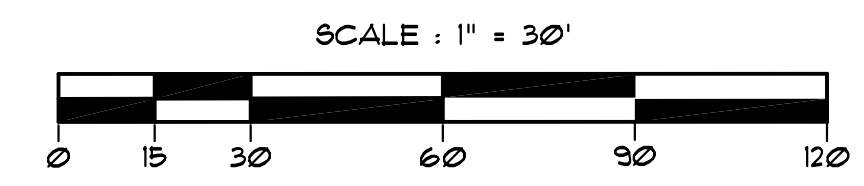


LOCATION MAP



LEGEND

- - - - - 253 - - - - - EXISTING CONTOUR (SEE NOTE 1A)
- - - - - 253 - - - - - EXISTING CONTOUR (SEE NOTE 1B)
- ~ ~ ~ ~ ~ EXISTING TREE LINE
- ☆ BARBEQUE GRILL
- EXISTING UTILITY POLE
- ○ — OVERHEAD UTILITY WIRES
- 8D — STORM DRAIN LINE
- CATCH BASIN
- ▨ EXISTING BUILDING
- ▨ EXISTING PAVEMENT
- - - - - EXISTING PAVEMENT



REV.	BY:	DATE:	CHANGES:

SJR ENGINEERING, INC.
 21 MATELOUER ROAD
 AUGUSTA, MAINE 04330
 (207) 622-1676 tel. & fax
 steves@sjeing.com

**TOPOGRAPHIC SITE PLAN
 PARKING LOT EXPANSION
 LAKE ST. GEORGE STATE PARK**
 ROUTE 3 - LIBERTY, MAINE
 PREPARED FOR
STATE OF MAINE

DATE	PROJECT
FEB. 2008	SJR #
DRAWN BY	SCALE
PLANIT	1" = 30'