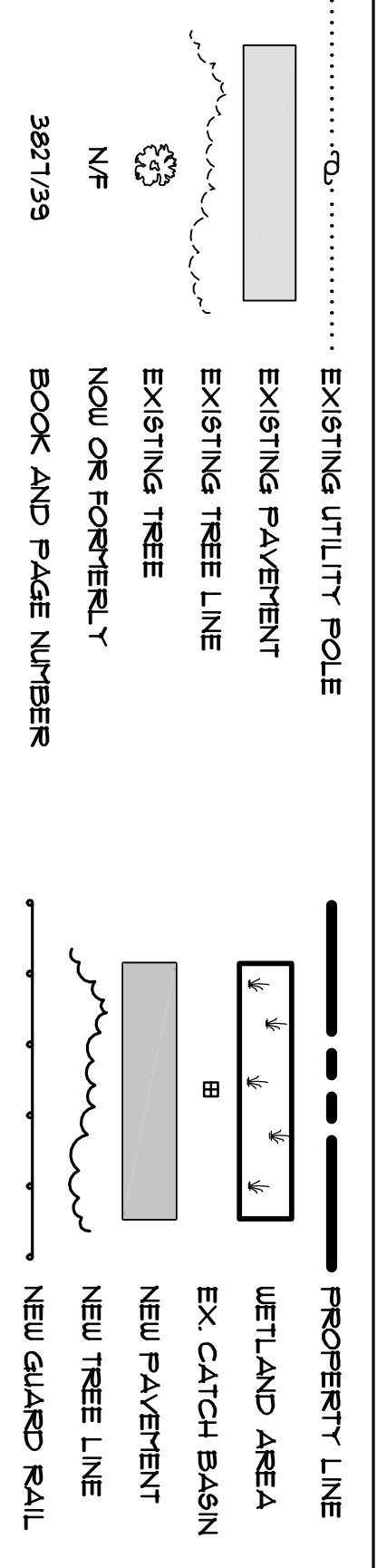


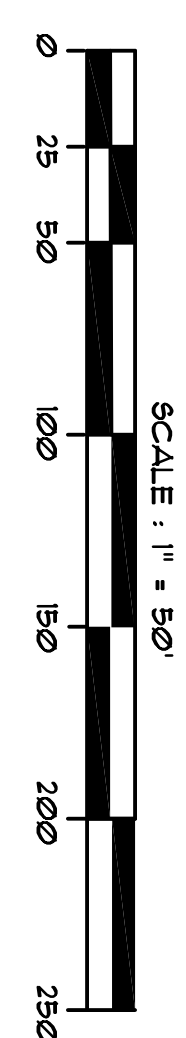
LEGEND



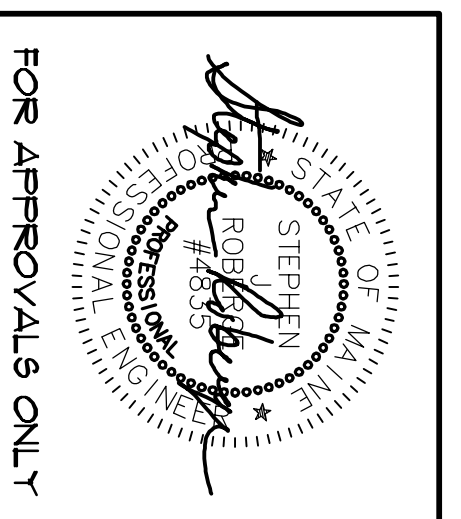
NOTES

- 1) EXISTING CONDITIONS SHOWN FROM AERIAL MAPPING BY KAPPA MAPPING, INC. DATED 4/12/04 SUPPLEMENTED WITH FIELD SURVEY AND EXPECTED AS-BUILT CONDITIONS FROM CONSTRUCTION ONGOING AND MAY NOT BE ACCURATE IN ALL LOCATIONS.
- 2) RESURFACE PROTECTION DISTRICT: REFERENCE IS MADE TO THE "LAND USE ORDINANCE FOR THE CITY OF AUGUSTA, MAINE DATED JULY 3, 1991" FOR SPECIFIC DETAILS REGARDING THE USE AND DIMENSIONAL REQUIREMENTS OF THIS AREA.
- 3) STREETS PROTECTION DISTRICT: THIS STREET IS LABELED "9P-50" AND "9P-100" ON THE ZONING MAP WHICH HAS THE FOLLOWING DIMENSIONAL RESTRICTIONS: NO LESS THAN 12' WIDE FRONT SETBACKS AND 10' WIDE SIDE SETBACKS. ANY CHANGES MADE TO THE ABOVE MENTIONED ZONING ORDINANCE FOR SPECIFIC DETAILS REGARDING THE USE OF THIS AREA.

LOT AREA	600000 SF.
FRONT YARD	50'
REAR YARD	35'
SIDE YARD	75' (WHERE ADJUTING RES. ZONE)
	25' (WHERE ADJUTING ZONE OTHER THAN RES.)



NOTE:
CORE SAMPLES OF EXISTING SHOULDER ARE TO BE TAKEN TO DETERMINE IF PAVEMENT BUILD-UP AND BASE ARE ADEQUATE.



Rev. 1 Traffic Improvements to Civic Center Drive Intersection 07/10/06

SJR ENGINEERING
21 MAYFLOWER ROAD
AUGUSTA, MAINE
TEL: (207) 622-1676

CENTRAL MAINE COMMERCE CENTER
TRAFFIC IMPROVEMENT PLAN
CIVIC CENTER DRIVE

SCALE: AS SHOWN DRAWN BY: BORYAC PROJECT: CHC-C11P
 DATE: JULY, 2006 CHECKED BY: SJR DRAWING: *1